



TABLE OF CONTENTS

Introduction

General Guidelines.....	3
Required Tools.....	4
Components.....	4

Installation

Overall Dimension.....	5
Project Planning.....	5
Assembly:	
Bolt Embedded Concrete Post to Substrate	6
Pour Concrete and Set 3” Post	6
Fasten 3” Post to Embedded ConcretPost.....	7

Care & Maintenance/Warranty.....	8
----------------------------------	---

INTRODUCTION

READ INSTRUCTIONS COMPLETELY BEFORE STARTING INSTALLATION

General Guidelines

It is the responsibility of the installer to meet all code and safety requirements, and to obtain all required building permits. The installer should determine and implement appropriate installation techniques for each installation situation. Fortress Building Products nor its distributors shall **NOT** be held liable for improper or unsafe installations.

Personal Protection Equipment (PPE) must be worn anytime you're using power tools. Eye protection, hearing protection, closed-toe shoes, gloves, long sleeves, and pants must be worn to keep yourself safe.

The installer holds primary responsibility for implementing all necessary safety measures.

At the end of a work period, all steel shavings and/or chips must be cleaned off the jobsite. Not doing so could result in the staining of surrounding surfaces.

Fortress Building Products **DOES NOT** cover all possible installation scenarios within these instructions. In some cases, it may be necessary for you to consult a professional engineer or building code official.

REQUIRED TOOLS



Goggles



Safety
Gloves



Tape
Measure



Speed
Square



Level



Pencil



String



Ear
Protector



Close-Toed
Shoes



Drill



Ratchet
Wrench



Hex Head Nut Driver Bits:
3/8" [10mm] & 5/16" [8mm]



Concrete Connection:
Hilti Kwik Bolt TZ concrete anchors



Steel Beam Connection:
3/8" Ø A3 thru-bolts

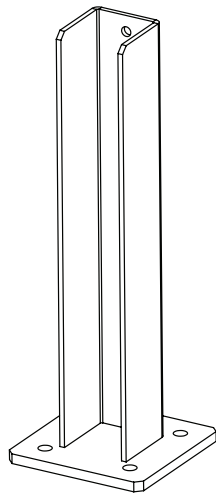


Wood Joist/Block Connection:
3/8" Ø standard hex lag screws

COMPONENTS

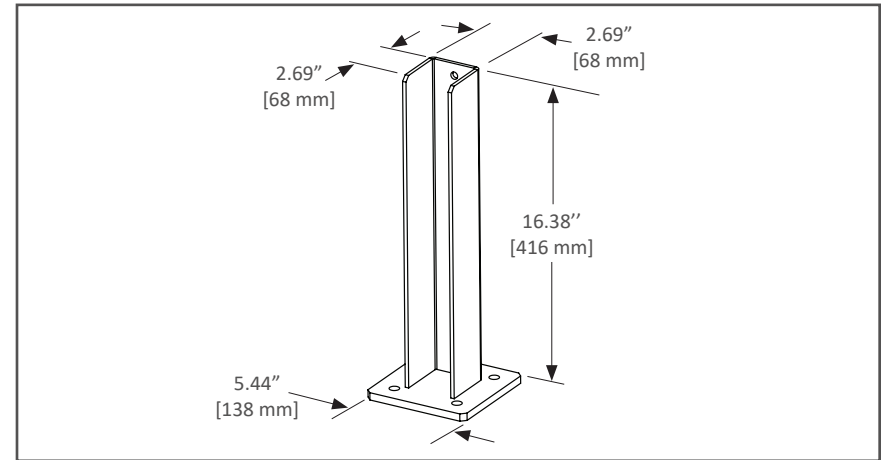


#12 Tek Screws (x4)



Embedded Concrete Post (x1)

OVERALL DIMENSIONS

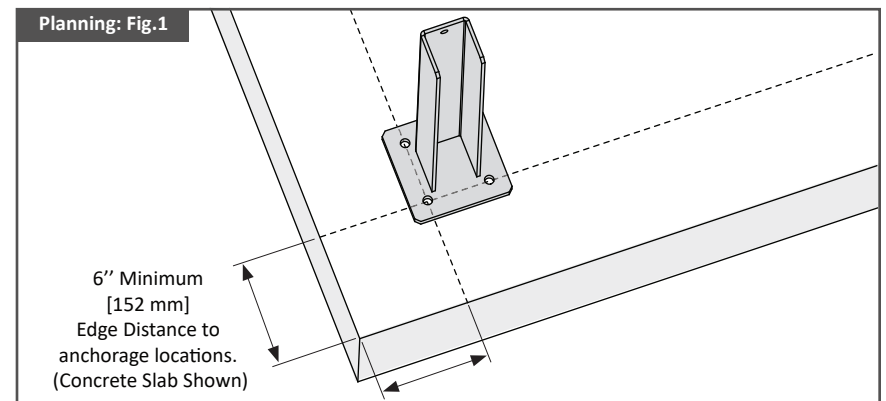


PROJECT PLANNING

Step 1: Measure and Prepare

1. If substrate is a concrete slab, it should be a minimum 3000 psi, and 6" thick with a 6" edge distance for all anchorage calculations.
2. Measure and mark locations on the substrate surface that correspond with holes on the Embedded Concrete Post in preparation for installing anchors.

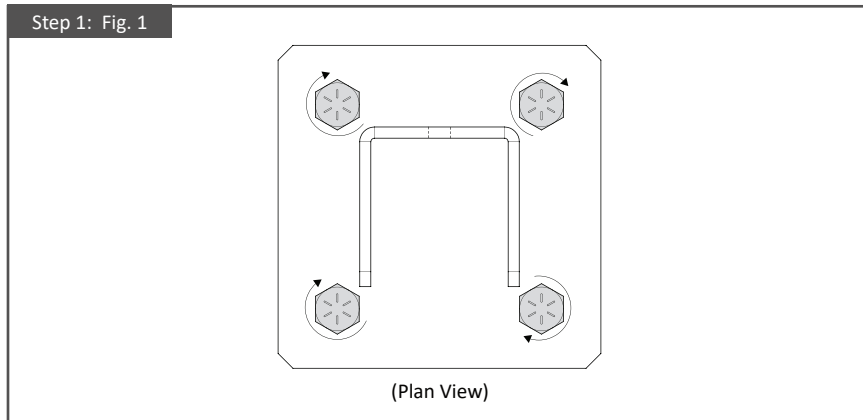
Note: Embedded Concrete Post supports maximum 42" tall posts at a maximum spacing of 6'-9".



ASSEMBLY

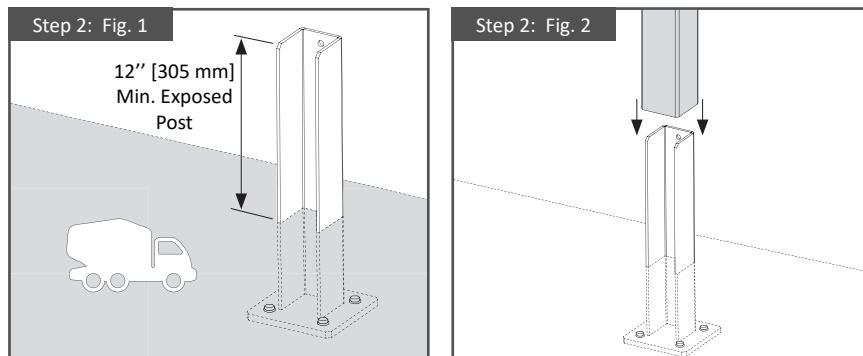
Step 1: Bolt Embedded Concrete Post to Substrate

1. Secure the Embedded Concrete Post using:
For Concrete Connection: 3/8" x 3" [10mm x 76mm] Hilti Kwik Bolt TZ concrete anchors.
For steel beam connection: 3/8" Ø A3 thru-bolts.
For wooden joist/block connections (4" min. thickness): 3/8" Ø standard hex lag screw.



Step 2: Pour Concrete and Set 3" Post

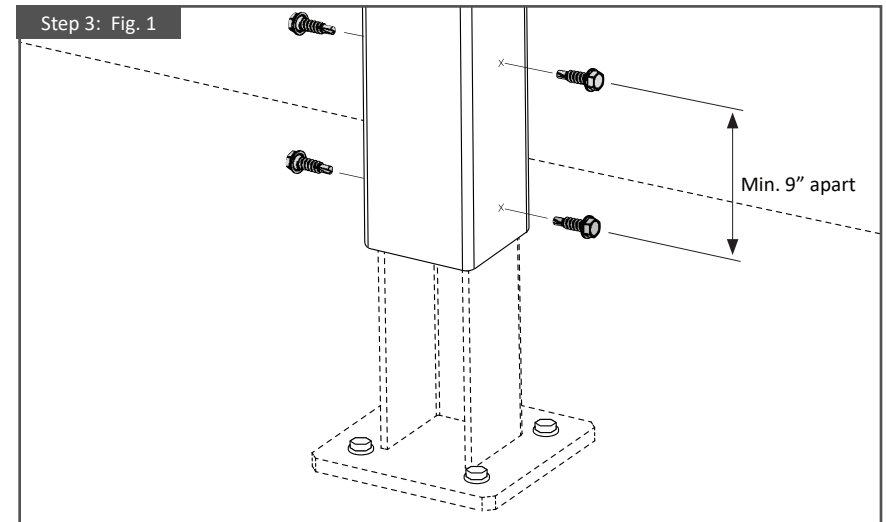
1. Once Embedded Concrete Post is secure, pour concrete, ensuring at least 12" of Post is exposed.
enough exposed height to set and attach 3" Post.
2. Set 3" Post over Embedded Concrete Post.



Step 3: Fasten 3" Post to Embedded Concrete Post

1. Once 3" Post is in place, use 4x #12 Tek Screws (2x each on opposite sides of post) screw 3" Post to secure it to the Embedded Concrete Post.

Note: Tek screws need to be a minimum of 9" apart vertically.



CARE & MAINTENANCE

Care And Maintenance Of Fortress Building Products Powder-Coated Products And Surfaces:

- Immediately after installation of your Fortress Building Products, clean powder-coated products and surfaces with a solution of warm water and non-abrasive, pH neutral detergent solution. Surfaces should be thoroughly rinsed after cleaning to remove all residues. All surfaces should be cleaned using a soft cloth or sponge.
- Ensure construction materials such as concrete, plaster, and paint splashes are removed immediately before they have a chance to dry. Failure to remove these materials may cause damage to the powder-coated surfaces.
- **DO NOT** allow metal shavings and/or chips to get dropped or blown into a pool, hot tub, or any other body of water. Staining could occur if this were to happen.
- The frequency of cleaning depends in part on the standard of appearance and also the requirements to remove deposits that may cause damage to the powder coating after prolonged exposure. Fortress recommends cleaning in three to four monthly intervals.
- **WARNING: Do not use strong solvents such as thinners, or solutions containing chlorinated hydrocarbons, esters, or ketones. Abrasive cleaners or cutting compounds should not be used.**

WARRANTY

To obtain and review a copy of the warranty, please go to: <https://Fortressbp.com/warranties>. You can also contact: (844) 909-1999 or write to: Fortress Building Products Warranty, 1720 N 1st St, Garland, TX 75040 to obtain a copy of the warranty.



FORTIFY THE FUTURE.

FortressBP.com | 866.323.4766