



EVOLUTION™

Evolution Spacer/Squash Bolt

Installation

STEEL FRAMING | STAIR SYSTEMS | PERGOLAS

FEATURES/PURPOSE OF THE SPACER/SQUASH BOLT

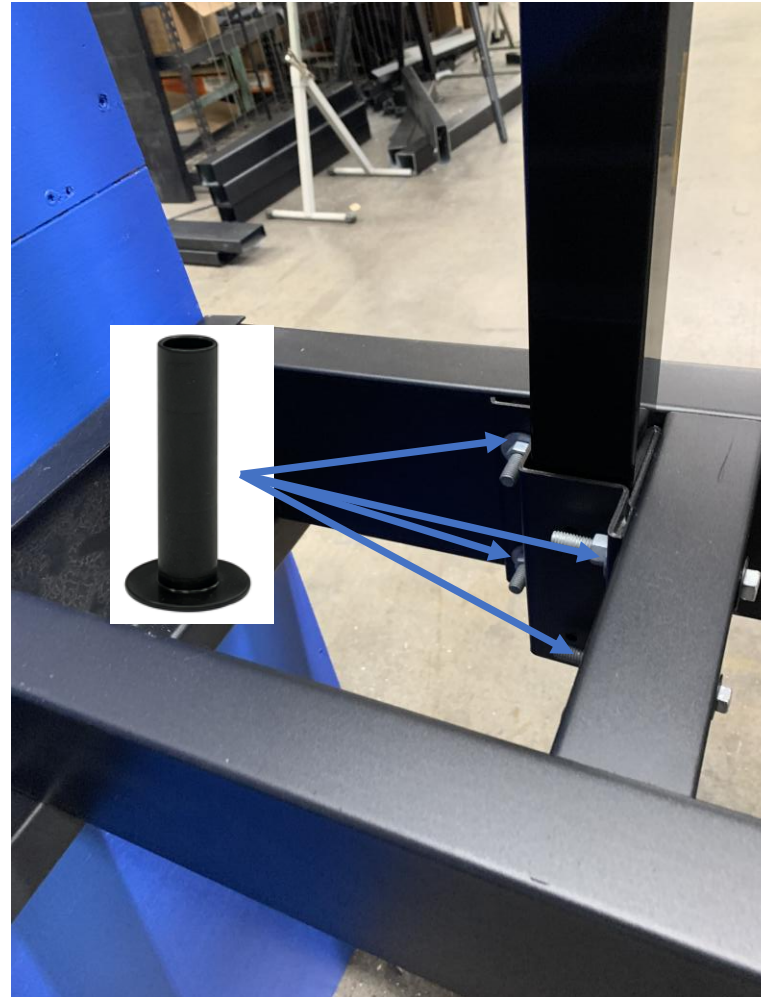
- The Spacer/Squash bolt is used when through bolting into the short (2") side of a joist or beam.
- Prevents the joist and beam from collapsing when through bolts are tightened down.
- Used most often when installing fascia mount brackets.

SPACER/SQUASH BOLT



- 18 Gauge
- G60 Galvanized and Powder-Coated.
- Used to prevent collapsing when tightening through bolts into Beams and Joists.

- The Spacer/Squash bolt was used when this fascia mount bracket was installed.
- Spacer/Squash Bolt is located at each through bolt location.
- Installation is simple:
 - Drill a ½" hole through the 2" side of the joist/beam.
 - Insert the Spacer/Squash Bolt.
 - Install the 3/8" through bolt and tighten.
- Necessary so the bolt can be securely tightened without deforming/squashing the joist.
- Can be used anytime you're through-bolting into an Evolution member.





EVOLUTION™